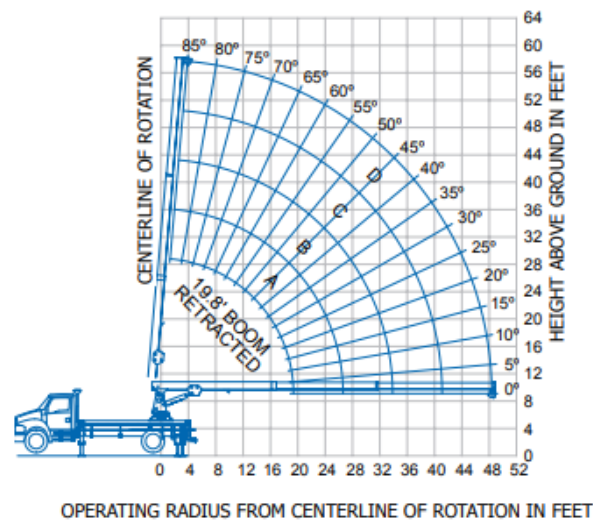
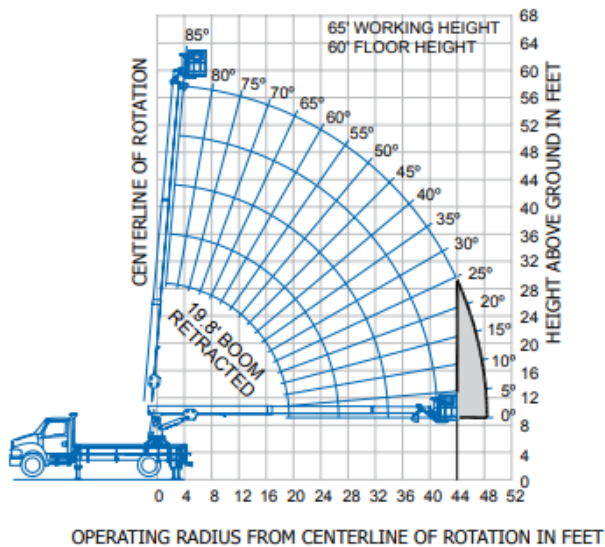


DEDUCTIONS	
Overhaul Weight	40 lb
Snatch Block	40 lb
2-Manbasket SLR Platform	700 lb

WEIGHTS		
1 Part Line	2 Part Line	WARNING
		Anti-two-block system, if supplied, must be in good operating condition before operating crane.
		Refer to the owner's manual.
		Keep at least three wraps of load line on the drum at all times.
3,500 lb	6,000 lb	3/8" 6 x 25 IWRC (3.5:1 SF) 13,120 lb min. breaking strength



The Gray Area represents a "no work" zone, do not place the basket in this area.

Meets ANSI B30.5 Requirements - Do not operate crane or accessories within 10' (3.05 m) of live power lines.
 NOTICE: This chart is for reference only and must not be used for lifting purposes. Consult factory for other boom options.

LOAD CHART FOR CRANE APPLICATIONS ONLY											
MAIN BOOM LOAD RATINGS IN LBS. WITH OUTRIGGERS FULLY EXTENDED											
Operating Radius	19.8 Feet		27.0 Feet		34.3 Feet		41.5 Feet		48.8 Feet		
	Feet	lb.	Feet	lb.	Feet	lb.	Feet	lb.	Feet	lb.	
8	66°	6,000	73°	5,910	77°	5,320					
10	59°	6,000	68°	5,020	73°	4,430	77°	4,170			
12	52°	5,420	64°	4,410	70°	3,820	74°	3,560	77°	3,380	
14	44°	4,980	59°	3,970	66°	3,380	71°	3,130	75°	2,940	
16	35°	4,640	54°	3,640	62°	3,050	68°	2,790	72°	2,610	
18	23°	4,360	48°	3,370	58°	2,790	65°	2,530	70°	2,350	
20			42°	3,160	54°	2,580	62°	2,320	67°	2,140	
24			26°	2,830	45°	2,250	55°	2,000	62°	1,820	
28					35°	2,020	48°	1,770	56°	1,590	
32					20°	1,830	40°	1,600	50°	1,420	
36							30°	1,460	43°	1,280	
40							15°	1,330	36°	1,170	
44									26°	1,080	
48										9°	970