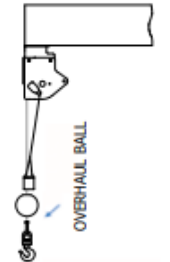
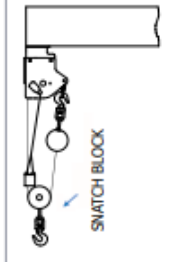
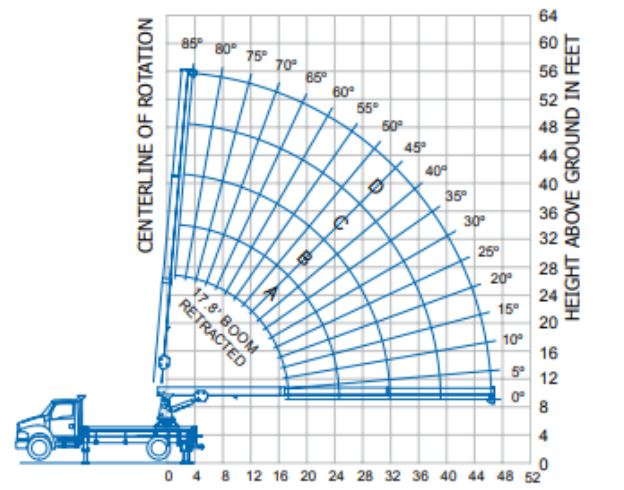
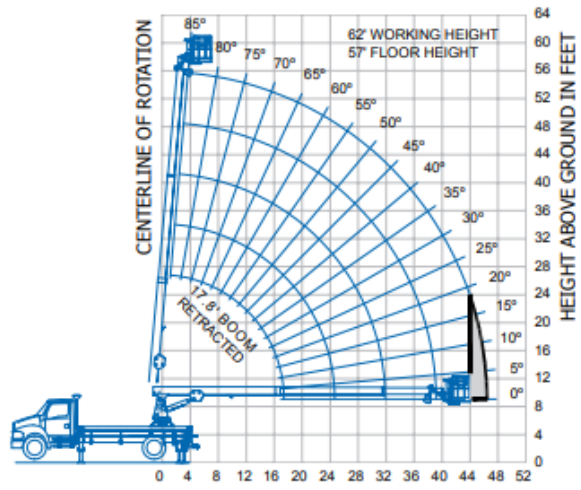


DEDUCTIONS	
Overhaul Weight	40 lb
Snatch Block	40 lb
2-Manbasket SLR Platform	700 lb

WEIGHTS		WARNING
1 Part Line	2 Part Line	
		<p>Anti-two-block system, if supplied, must be in good operating condition before operating crane.</p> <p>Refer to the owner's manual.</p> <p>Keep at least three wraps of load line on the drum at all times.</p>
3,500 lb	6,000 lb	
		3/8" 6 x 25 IWRC (3.5:1 SF) 13,120 lb min. breaking strength



The Gray Area represents a "no work" zone, do not place the basket in this area.

Meets ANSI B30.5 Requirements - Do not operate crane or accessories within 10' (3.05 m) of live power lines.
 NOTICE: This chart is for reference only and must not be used for lifting purposes. Consult factory for other boom options.

LOAD CHART FOR CRANE APPLICATIONS ONLY										
MAIN BOOM LOAD RATINGS IN LBS. WITH OUTRIGGERS FULLY EXTENDED										
Operating Radius	17.8 Feet		25.1 Feet		32.3 Feet		39.6 Feet		46.8 Feet	
	Feet	lb.	Feet	lb.	Feet	lb.	Feet	lb.	Feet	lb.
8	63°	6,000	71°	6,000	76°	5,400				
10	55°	6,000	66°	5,150	72°	4,510	76°	4,220		
12	47°	5,710	61°	4,540	68°	3,900	73°	3,620	76°	3,420
14	37°	5,260	56°	4,100	64°	3,460	70°	3,180	74°	2,990
16	24°	4,920	50°	3,770	60°	3,120	67°	2,850	71°	2,650
18			44°	3,510	56°	2,860	64°	2,590	69°	2,390
20			37°	3,290	52°	2,650	60°	2,380	66°	2,180
24			14°	2,940	42°	2,330	53°	2,060	60°	1,860
28					29°	2,090	45°	1,830	54°	1,640
32							36°	1,650	48°	1,460
36							24°	1,510	41°	1,320
40									32°	1,210
44									20°	1,110